





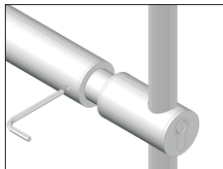
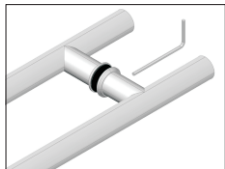
Technical Detail | Handle Lock

701GHLR110EX170

Extended fitting for 701GHLR109170 & 701GHLR100170
Fit for wooden doors 45mm thick

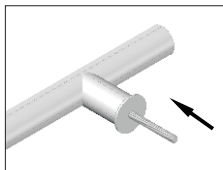
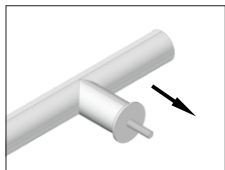
	Cylinder connecting rod	1 pc / set
	Middle connector	1 pc / set
	80mm long connecting screw	4 pcs / set
	Allen key	1 pc / set

Installation Instruction



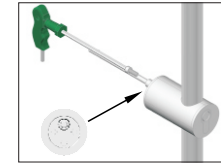
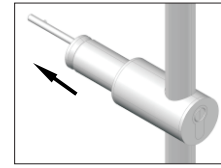
STEP 1

- Loosen the set screws to separate the handles.



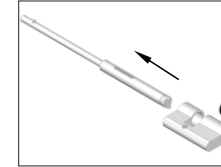
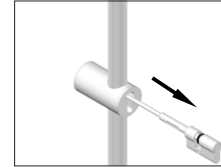
STEP 2

- Remove the old connector screw and replace with the 80mm connector screw.



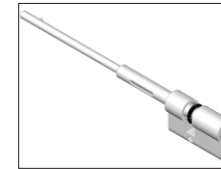
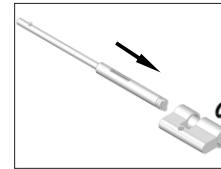
STEP 3

- Pull out the old middle connector and use the 701GHLR110EX170 Allen key to loosen the set screw inside the lock.



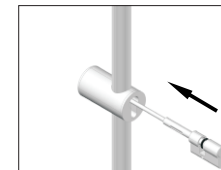
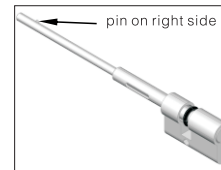
STEP 4

- Remove the cylinder and slip off the silicone O-ring to remove the cylinder connector rod.



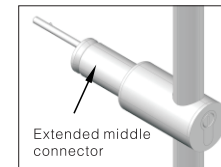
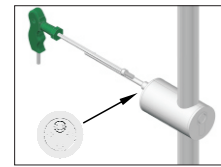
STEP 5

- Take the 701GHLR110EX170 cylinder connector rod and slip off the silicone O-ring to install it onto the cylinder. Replace the O-ring.



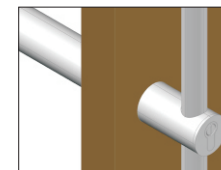
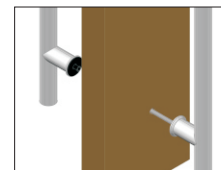
STEP 6

- Make sure the pin on the cylinder connector is facing to the right. Place the cylinder and 701GHLR110EX170 cylinder connector rod back into the lock.



STEP 7

- Tighten the set screw inside the lock and insert the 701GHLR110EX170 middle connector.



STEP 8

- Align the handles on the door and tighten the set screws on the handle to finish the installation.