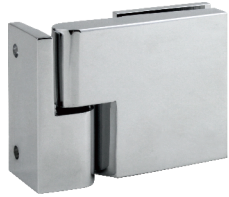


Technical Detail

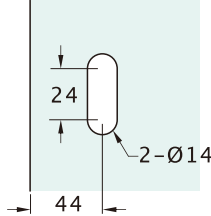
Square lift off hinge left side 90° wall to glass



Left side



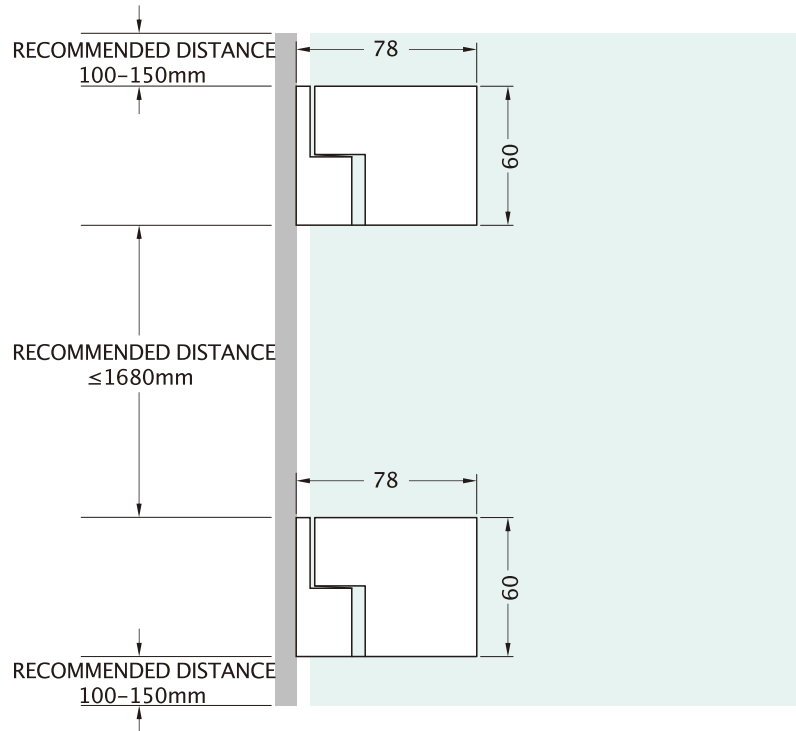
Glass cut out:



Installation Instruction

MODEL	Max door width	Max door weight	Glass thickness
PGLOH1409003140	1000mm	45KG	8 - 12mm glass
PGLOH1409003195	1000mm	45KG	8 - 12mm glass

Finishes
 140 = Chrome
 195 = Brushed nickel



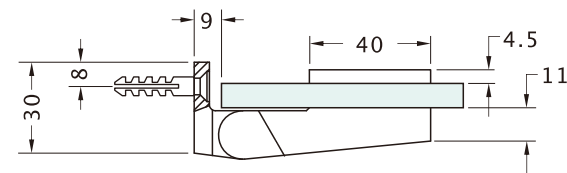
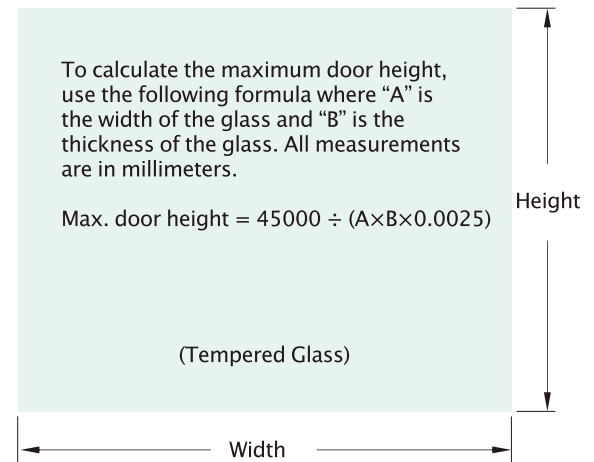
Step 1. Ensure all glass panels are made of tempered glass.

Step 2. Measure the size and weight of the glass door. Do not exceed the max door width and max door weight.

Step 3. Prepare the glass as indicated in the template and at the recommended distances.

Step 4. Install the hinge to the door as shown in the drawing.

Step 5. Finish installing the door and test that it opens and closes properly.



Tools required to install:

Spirit Level, Measuring tape,
 Power drill, Allen key set,
 Philips screwdriver,
 Plastic wedges and
 8 - 10 mm drill bit for stone.

Please see safety instructions on power drill before starting assembly

285x210mm